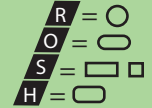
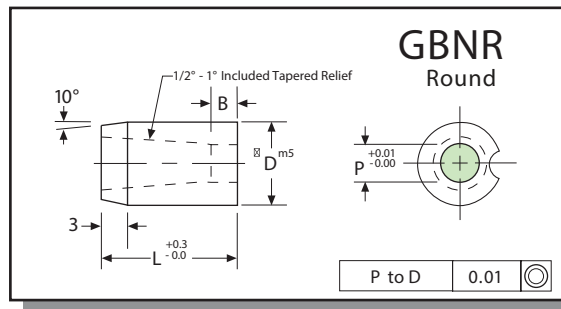




General Button Numerical



GBN_



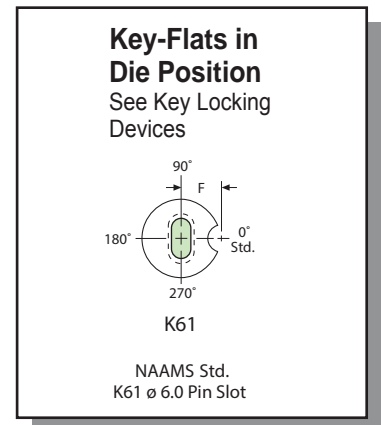
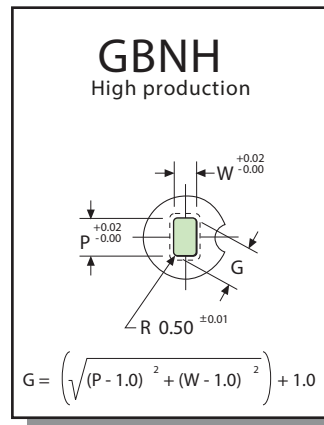
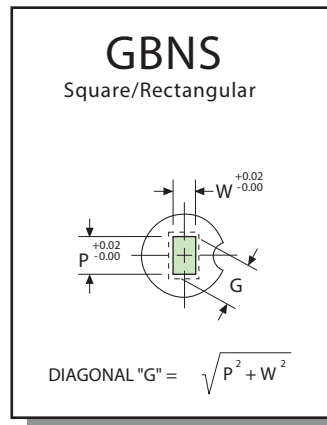
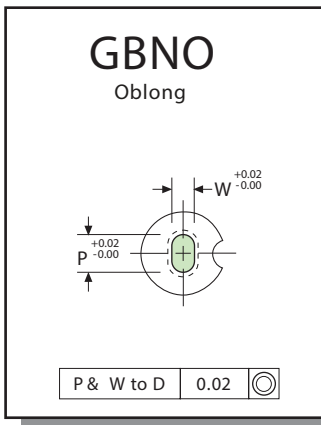
NAAMS Standards when CNC machining.

Ordering Example:
(12) GBNR 25-3-30 A2 P13.7 K61

Ordering Example:
(9) GBNO 38-8-32 A2 P26.4 W17.1 K61

A2, R/c 60-63 double tempered

Type	"D"	Land "B"			Overall Length "L"										Point Range "P"
					13	16	20	22	25	28	30	32	35	40	
GB NR	10	3	4	5	13	16	20	22	25	28	30	32	35		1.6 - 6.8
GB NR	13	3	5	8	13	16	20	22	25	28	30	32	35		3.0 - 8.8
GB NR	16	3	5	8			20	22	25	28	30	32	35		7.4 - 10.8
GB NR	20	3	5	10			20	22	25	28	30	32	35		9.5 - 13.6
GB NR	22	3	6	10			20	22	25	28	30	32	35		10.5 - 15.0
GB NR	25	3	6	10			20	22	25	28	30	32	35		12.0 - 17.0
GB NR	32	3	6	12			20	22	25	28	30	32	35		16.0 - 22.0
GB NR	38	3	8	12			20	22	25	28	30	32	35		18.0 - 27.0
GB NR	40	3	8	12			20	22	25	28	30	32	35		18.0 - 27.0
GB NR	45	3	8	12				22	25	28	30	32	35	40	18.0 - 35.0
GB NR	50	3	8	12				22	25	28	30	32	35	40	18.0 - 40.0
GB NR	56	3	8	12				22	25	28	30	32	35	40	18.0 - 45.0
GB NR	63	3	8	12				22	25	28	30	32	35	40	18.0 - 50.0
GB NR	71	3	8	12				22	25	28	30	32	35	40	18.0 - 56.0
GB NR	76	3	8	12					25	28	30	32	35	40	25.0 - 60.0
GB NR	85	3	8	12					25	28	30	32	35	40	25.0 - 66.0
GB NR	90	3	8	12					25	28	30	32	35	40	32.0 - 70.0
GB NR	100	3	8	12					25	28	30	32	35	40	32.0 - 78.0



Type	"D"	Land "B"			Overall Length "L"										Min. "W"	Max. "P"/"G"
					13	16	20	22	25	28	30	32	35	40		
GB N_	10	3	4	5	13	16	20	22	25	28	30	32	35		1.3	6.8
GB N_	13	3	5	8	13	16	20	22	25	28	30	32	35		1.9	8.8
GB N_	16	3	5	8			20	22	25	28	30	32	35		1.9	10.8
GB N_	20	3	5	10			20	22	25	28	30	32	35		1.9	13.6
GB N_	22	3	6	10			20	22	25	28	30	32	35		1.9	15.0
GB N_	25	3	6	10			20	22	25	28	30	32	35		1.9	17.0
GB N_	32	3	6	12			20	22	25	28	30	32	35		1.9	22.0
GB N_	38	3	8	12			20	22	25	28	30	32	35		1.9	27.0
GB N_	40	3	8	12			20	22	25	28	30	32	35		1.9	27.0
GB N_	45	3	8	12				22	25	28	30	32	35	40	2.4	35.0
GB N_	50	3	8	12				22	25	28	30	32	35	40	4.0	40.0
GB N_	56	3	8	12				22	25	28	30	32	35	40	4.0	45.0
GB N_	63	3	8	12				22	25	28	30	32	35	40	4.0	50.0
GB N_	71	3	8	12				22	25	28	30	32	35	40	4.0	56.0
GB N_	76	3	8	12					25	28	30	32	35	40	5.6	60.0
GB N_	85	3	8	12					25	28	30	32	35	40	5.6	66.0
GB N_	90	3	8	12					25	28	30	32	35	40	5.6	70.0
GB N_	100	3	8	12					25	28	30	32	35	40	5.6	78.0

Made better to last longer

All specifications, dimensions and design characteristics shown are subject to change without notice

Quality Craftsmanship Assured

Email: sales@diemouldequipment.com.au

Die Mould Equipment

Web: www.diemouldequipment.com.au

© The copyright in this material vests in Die Mould Equipment Pty Ltd and may not be reproduced, adapted or communicated without the express written permission of the copyright owner.