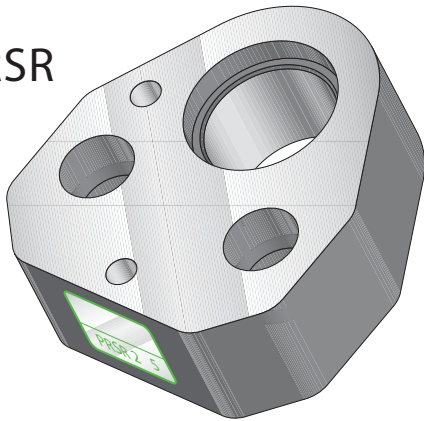




Precision Retainer Shoulder

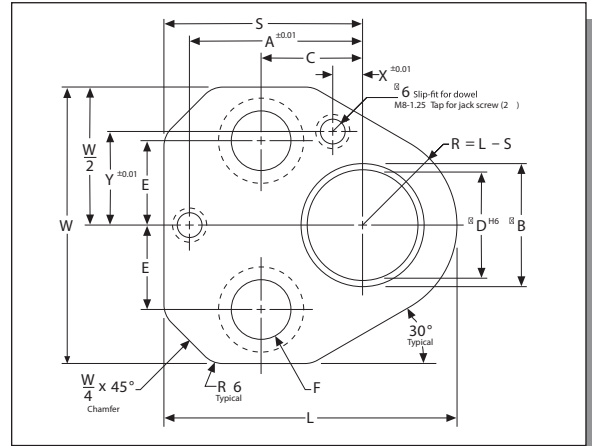
PRSR



For Round Shoulder Punches

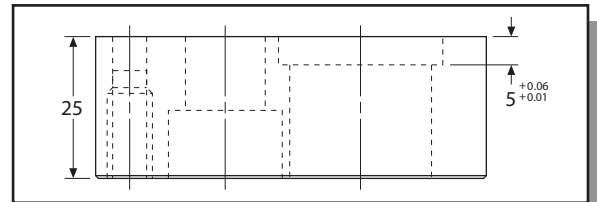
Ordering Example:
(3) PRSR 25

Retainer set includes:
2 Socket head cap screws
2 Vented and tapped dowels



A Precision and fast mounting Shoulder Punch Retainer for Round Punches and Pilot Punches

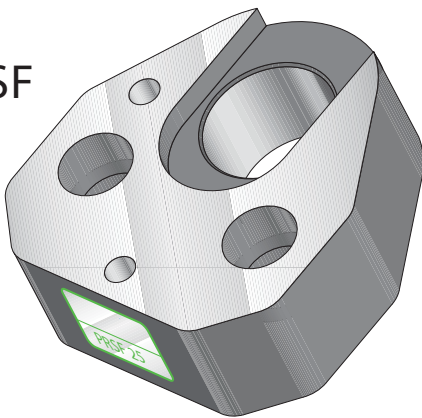
After finish CNC machining your punch plate or bolster, our Precision dowel holed Shoulder Punch Retainers are easily mounted onto your Stamping Tool. The Punch body counter bore hole is finish machined to accept our standard Shoulder and Head type Punches.



Backing Plates 2mm and 5mm thick.

Type	"D"	"W"	"L"	"B"	"S"	"A"	"C"	"E"	"X"	"Y"	"F"
PRSR	10	41.0	43.5	14.0	34.0	26.924	19.05	11.12	7.5	9.0	M8
PRSR	13	48.5	49.6	17.0	37.0	29.972	19.05	14.27	6.5	12.0	M8
PRSR	16	51.7	52.7	20.0	38.6	31.750	19.05	15.87	6.0	13.5	M8
PRSR	20	56.8	59.3	24.0	41.9	33.528	19.05	17.47	5.0	16.5	M10
PRSR	25	64.5	68.9	29.0	46.7	40.640	23.82	19.84	7.0	22.0	M12
PRSR	32	64.5	68.9	36.0	46.7	40.640	23.82	19.84	7.0	22.0	M12

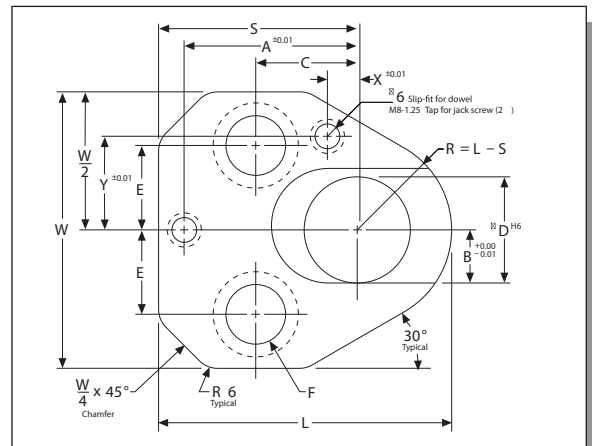
PRSF



For Form and Shape Punches

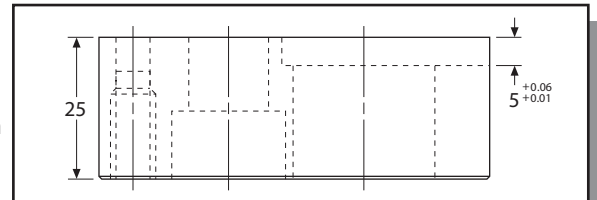
Ordering Example:
(2) PRSF 25

Retainer set includes:
2 Socket head cap screws
2 Vented and tapped dowels



A fast and cost effective way to mount Precision ground shape and form Punches.

Our standard K2 key flat perfectly orientates the shaped Punch inside the retainer. Using the two CNC machined dowel holes in your punch plate or bolster making it easy to locate and mount complex shaped Punches.



Backing Plates 2mm and 5mm thick.

Type	"D"	"W"	"L"	"B"	"S"	"A"	"C"	"E"	"X"	"Y"	"F"
PRSF	10	41.0	43.5	5.0	34.0	26.924	19.05	11.12	7.5	9.0	M8
PRSF	13	48.5	49.6	6.5	37.0	29.972	19.05	14.27	6.5	12.0	M8
PRSF	16	51.7	52.7	8.0	38.6	31.750	19.05	15.87	6.0	13.5	M8
PRSF	20	56.8	59.3	10.0	41.9	33.528	19.05	17.47	5.0	16.5	M10
PRSF	25	64.5	68.9	12.5	46.7	40.640	23.82	19.84	7.0	22.0	M12
PRSF	32	64.5	68.9	16.0	46.7	40.640	23.82	19.84	7.0	22.0	M12