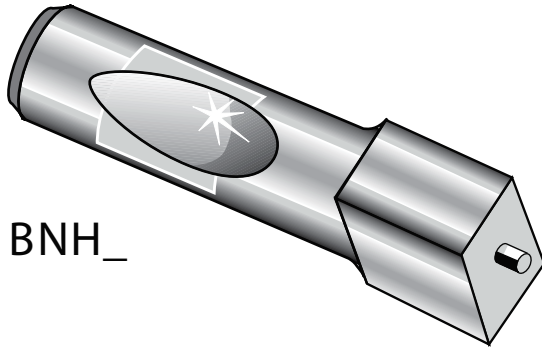
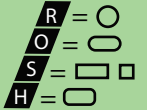




Ball-Lock

Nose-Over-Ejector

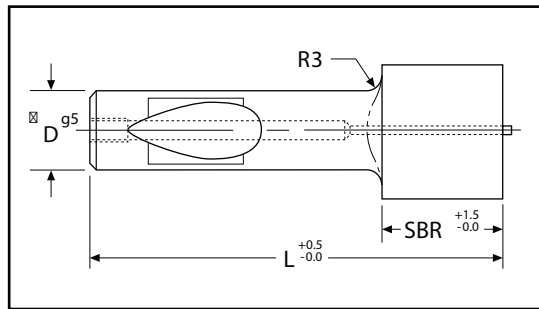
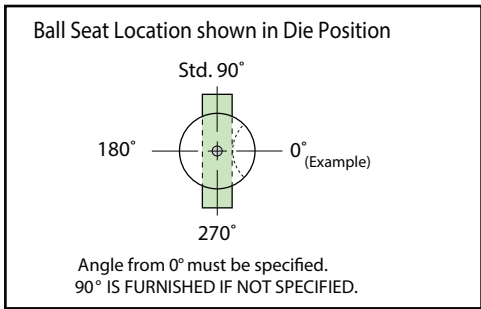
Heavy-Duty



BNH_

Ordering Example:
(8) BNHR 25-25-90 M2 P32.4

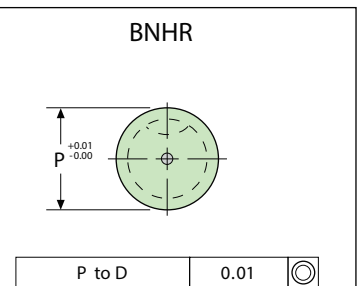
M2, R/c 60-63 triple tempered



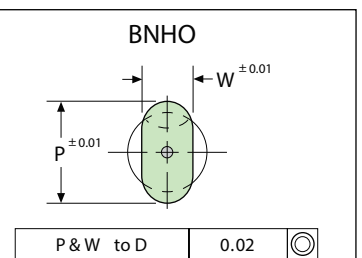
$$BNHS \text{ "G"} = \sqrt{P^2 + W^2}$$

$$BNHH \text{ "G"} = \left(\sqrt{(P-1.0)^2 + (W-1.0)^2} \right) + 1.0$$

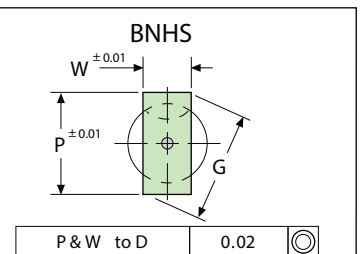
Type	"D"	Point Length "SBR"	Overall Length "L"				Min "P"	Max. "P"	Ejector Type
			71	80	90	100			
BNHR	13	20	71	80	90	100	13.1	32.0	E6M
BNHR	16	25	71	80	90	100	16.1	38.0	E9M
BNHR	20	25	71	80	90	100	20.1	38.0	E9M
BNHR	25	25	71	80	90	100	25.1	45.0	E9M
BNHR	32	32		80	90	100	32.1	50.0	E12M
BNHR	40	32		80	90	100	40.1	63.5	E12M



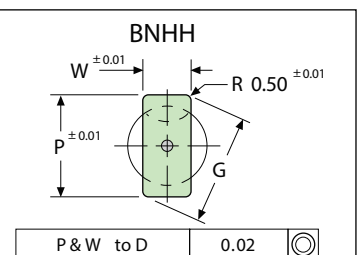
Type	"D"	"SBR"	71	80	90	100	Min. "W"	Max. "P"	Ejector Type
BNHO	13	20	71	80	90	100	5.0	32.0	E6M
BNHO	16	25	71	80	90	100	6.5	38.0	E9M
BNHO	20	25	71	80	90	100	8.0	38.0	E9M
BNHO	25	25	71	80	90	100	11.0	45.0	E9M
BNHO	32	32		80	90	100	12.5	50.0	E12M
BNHO	40	32		80	90	100	14.0	63.5	E12M



Type	"D"	"SBR"	71	80	90	100	Min. "W"	Max. "G"	Ejector Type
BNHS	13	20	71	80	90	100	5.0	32.0	E6M
BNHS	16	25	71	80	90	100	6.5	38.0	E9M
BNHS	20	25	71	80	90	100	8.0	38.0	E9M
BNHS	25	25	71	80	90	100	11.0	45.0	E9M
BNHS	32	32		80	90	100	12.5	50.0	E12M
BNHS	40	32		80	90	100	14.0	63.5	E12M



Type	"D"	"SBR"	71	80	90	100	Min. "W"	Max. "G"	Ejector Type
BNHH	13	20	71	80	90	100	5.0	32.0	E6M
BNHH	16	25	71	80	90	100	6.5	38.0	E9M
BNHH	20	25	71	80	90	100	8.0	38.0	E9M
BNHH	25	25	71	80	90	100	11.0	45.0	E9M
BNHH	32	32		80	90	100	12.5	50.0	E12M
BNHH	40	32		80	90	100	14.0	63.5	E12M



Made better to last longer

All specifications, dimensions and design characteristics shown are subject to change without notice

Quality Craftsmanship Assured

Email: sales@diemouldequipment.com.au

Die Mould Equipment

Web: www.diemouldequipment.com.au

© The copyright in this material vests in Die Mould Equipment Pty Ltd and may not be reproduced, adapted or communicated without the express written permission of the copyright owner.