

Button Mould Pressure Sensors

Both Models Available in 12, 24 and 36 inch lengths



DME Button Mould Pressure Sensors are used for measuring pressures in conjunction with auxiliary recording and control equipment in injection, die cast and transfer moulds. They provide a full-scale output of 2 millivolts per volt of excitation.

Three Models

Available in 125, 500 and 2000 pounds force.

Hermetically Sealed

Allows sensor to be used where moisture is present.

Permanently Installed

Minimizes damage due to mishandling of sensors.

Temperature Compensated

Special amplifiers that compensate for temperature changes are avoided.

Constant Output

Because each sensor is electrically identical, each sensor has the same output. This similarity practically eliminates the need to recalibrate the readout system when sensors are exchanged. Only a slight readjustment of the zero setting of the readout system may be required when exchanging sensors. Therefore errors in calibration are non-existent and operators will spend less time setting up control systems and recorders.

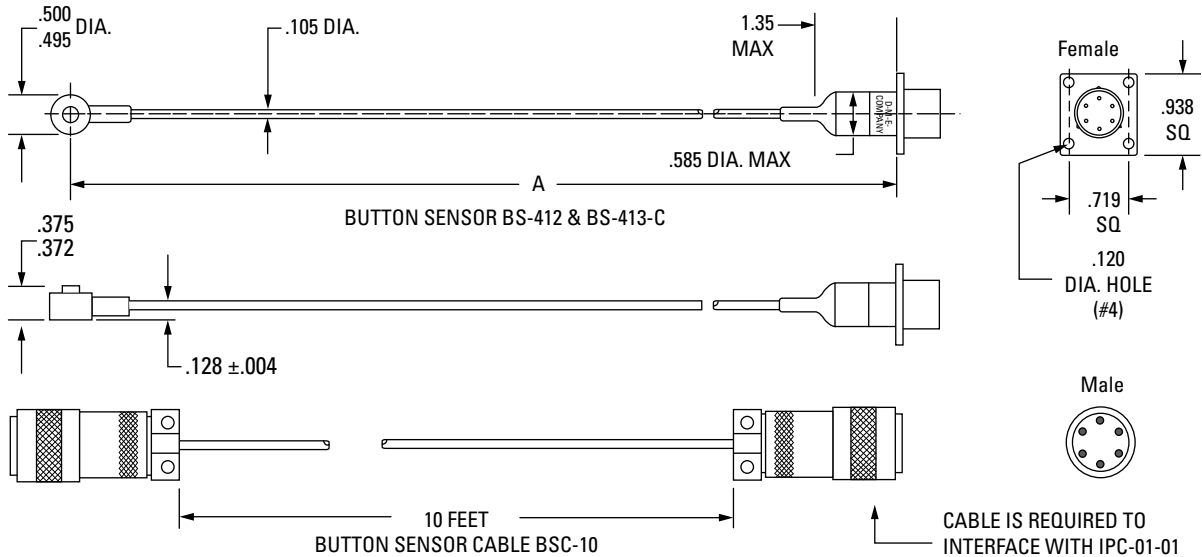
Small Size

Suitable for small moulds or moulds where water lines, support pillars, etc., inhibit the use of slide sensors.

Installation

The Button Sensor is usually installed under an ejector pin and the shielded lead wire is run to the outside of the mould for mounting. To accommodate the button sensor, a slot and counterbored hole is machined into the ejector plate. See installation information for details.

NIST TRACEABLE
SUPPLIED WITH CERTIFICATE OF CALIBRATION



BUTTON Mould PRESSURE SENSORS

Supplied with soldered on flush mount connector Amphenol PT02A10-6S (Mating connector Amphenol PT06A10-6P(SR) not supplied).

BUTTON SENSOR EXTENSION CABLE*

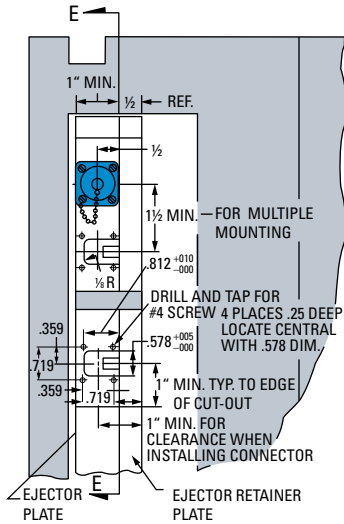
FORCE POUNDS	MEASURES PRESSURE ON PINS FROM:	A LENGTH				
		6" LEADS	12" LEADS	18" LEADS	24" LEADS	36" LEADS
125	1/32 Thru 3/32 (1 Thru 3mm) dia.	BS411C6	BS411C12	BS411C18	BS411C24	-
500	1/16 Thru 3/16 (2 Thru 6mm) dia.	-	BS412C12	-	BS412C24	BS412C36
2000	3/16 Thru 1/2 (6 Thru 16mm) dia.	-	BS413C12	-	BS413C24	BS413C36

ITEM NUMBER	LENGTH
BSC-10	10 FEET

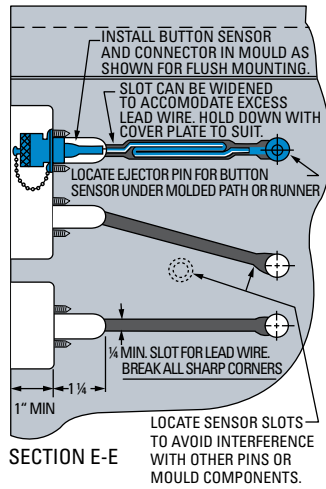
Button Mould Pressure Sensors

INSTALLATION INFORMATION

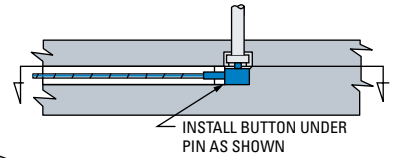
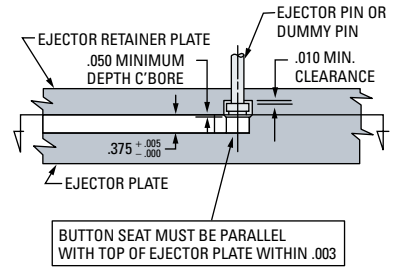
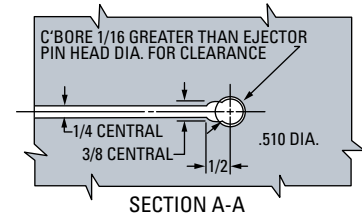
FLUSH MOUNTED CONNECTOR



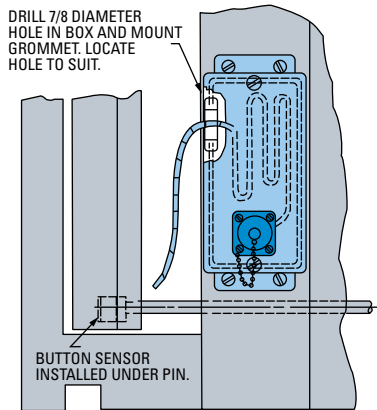
NOTE: When ejector plate is thicker than 1" connector may be centered on plate thickness. Altering mounting dimensions as required slot for lead wire should be depended as it approaches connector end as required.



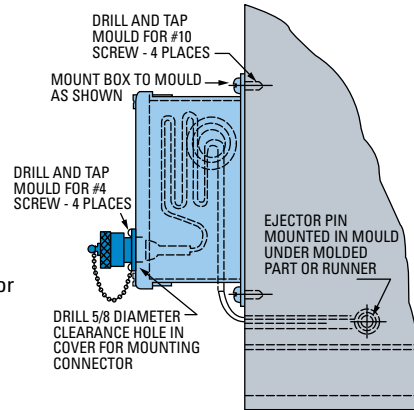
NOTE: When dummy pin installation is made. Altering mounting dimensions and location as required.



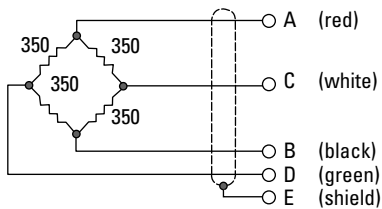
OUTSIDE BOX MOUNTED



NOTE: When installing button sensor in mould pass button through hole in cover and hole in box before incorporating into mould under pin excess wire may be left in box.



WIRING INFORMATION



- + POWER A (red)
- POWER B (black)
- + SIGNAL C (white)
- SIGNAL D (green)
- GROUND E (shield)

WARNING:
DO NOT REMOVE CONNECTOR FROM SENSOR CABLE. CALIBRATION WILL BE ALTERED.

SPECIFICATIONS

PRESSURE MEASUREMENT RANGE	0 to 20,000 psi (FOR RECOMMENDED PIN DIAMETERS)	
FORCE RANGE	lb.	kg.
ITEM NO. BS-411C	125	60
ITEM NO. BS-412C	500	225
ITEM NO. BS-413C	2000	900
MAXIMUM LOAD	150% FULL SCALE	
TEMPERATURE RANGE	0°F TO 450°F	
TEMPERATURE COMPENSATION	2% FULL SCALE	
INPUT	12V MAX.	
OUTPUT	2.0 mV/V FULL SCALE	
ACCURACY	.3% FULL SCALE	
REPEATABILITY	0.1% FULL RANGE OUTPUT	
FULL RANGE DEFLECTION	LESS THAN .0008"	
CIRCUIT	4-ARM 350 OHM BRIDGE	
CONNECTOR	AMPHENOL PT02A10-6S MATES WITH AMPHENOL PT06A10-6P (SR)	