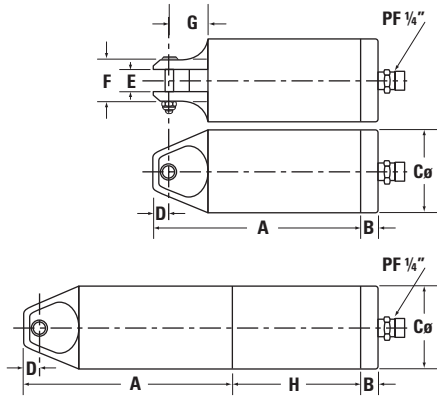


Fixture Mount Cutters

Non-Valved

MP25AM

Rounded Body Fixture Cutter
444 lbs. Cutting Power
(without blade)



Blade (for both **MP25AM** & **MP20M**)
FD5

MR20M

Rounded Body Fixture Cutter
311 lbs. Cutting Power
(without blade)

	Dimensions (mm)								Body Diameter	OAL Inch	Weight oz	Max PSI	Cutting Power
	A	B	C	D	E	F	G	H					
MR20M	109	12	45	9	12	23	22	-	1-3/4"	5-3/8	8.8	85	311 Lbs.
MR25AM	109	12	45	0	12	23	22	87	1-3/4"	9-5/16	16.3	85	444 Lbs.

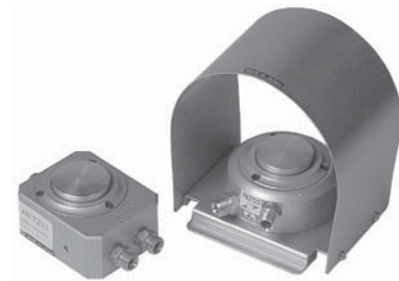
Mounting Brackets



Type A
Mounting Bracket for
MR-3 and **MR-10**
(dia. range =
1¹³/₁₆" ~ 1²³/₃₂")



Type B
Mounting Bracket
for **MR-30A**,
MP25AM, **MP20M**
(dia. range =
2⁷/₃₂" ~ 1²⁹/₃₂")



FV80

All Pneumatic cutters with two 1/4" NPT fittings.

FB70S

For use with all pneumatic cutters with one air inlet 1/4" NPT fittings.

All brackets Base = 4" x 4" OAL=6"