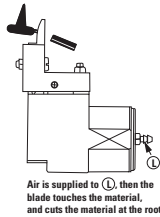
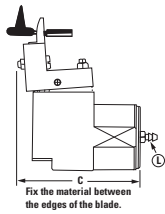
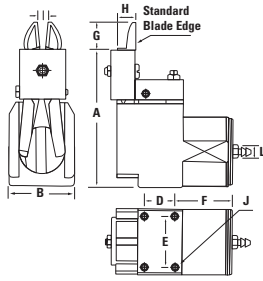


Slide & Cut Power Units

"MG" Series



MG20SPC

6mm Cutting capacity
308 lbs. cutting power!

(without blade)

Blade (for MG20SPC)
Part Number **FG5**



MG10SPC

4mm Cutting capacity
132 lbs. cutting power!

(without blade)

Blade (for MG10SPC)
Part Number **FG3**



MG3SPC

2mm Cutting capacity
110 lbs. cutting power!

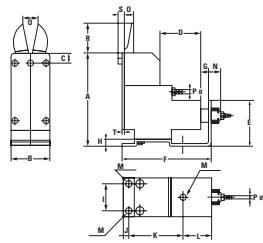
(without blade)

Blade (for MG3SPC)
Part Number **FG10**

Part Number	Dimensions (mm)											Cutting Capacity	Weight w/o blade	PSI req'd	Air Consumption
	A	B	C	D	E	F	G	H	I	J	L				
MG3SPC	50	20	60	16	14	25	15	7	4	M3	ø4	2mm	2.8 oz.	70	1.3 cu. in./stroke
MG10SPC	73	35	73	20	27	29	17.5	9	7	M3	ø4	4mm	8.1 oz.	70	3.6 cu. in./stroke
MG20SPC	95	46	89	21	36	39	19	12	8	M4	ø4	6mm	14.8 oz.	85	5.5 cu. in./stroke

Slide & Cut Power Units

"ME" Series

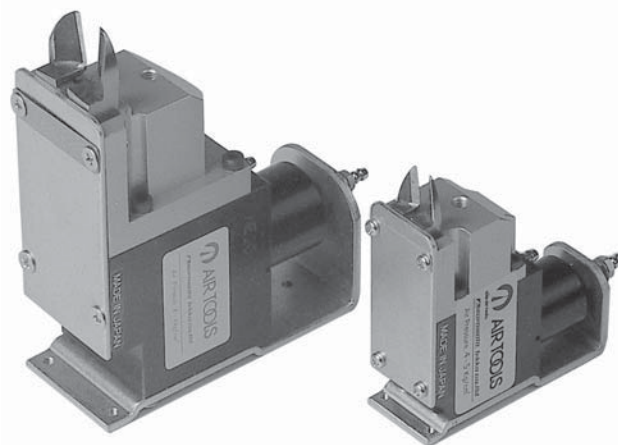


ME20

4.5mm Cutting capacity
132 lbs. cutting power!

(without blade)

Blade (for ME20)
Part Number **F5E**



ME5

1.2mm Cutting capacity
66 lbs. cutting power!

(without blade)

Blade (for ME5)
Part Number **F1E**

ME10

2.5mm Cutting capacity
121 lbs. cutting power!

(without blade)

Blade (for ME10)
Part Number **F3E**

Part Number	Dimensions (mm)											Cutting Capacity	Weight w/o Blade	Max. PSI	Air Consumption
	A	B	C	D	E	F	G	H	I	J	L				
ME5	75.2	29	31.2	77.2	22	5	50	22.2	M3	ø4	21	1.2mm	2.8 oz.	70 PSI	2.4 cu. in./stroke
ME10	97.2	35	42.2	88.2	26	5	50	33.2	M3	ø4	21	2.5mm	8.1 oz.	70 PSI	5.5 cu. in./stroke
ME20	111.2	44	48.2	103.2	34	5	85	13.2	M4	ø4	27	4.5mm	14.8 oz.	85 PSI	9.2 cu. in./stroke